

How to make it

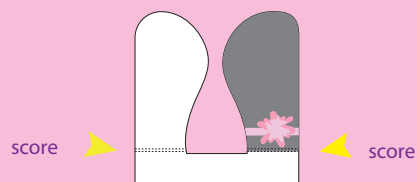
Puppy Pop-up Card

You need:

- Print outs of these pages on heavy glossy paper except for the last page. Print the last page on regular thin paper.
- Scissors and/or craft knife (ask an adult for help when cutting).
- Glue and ruler

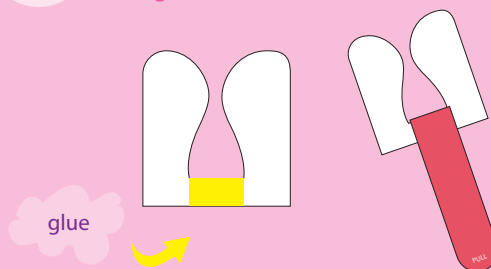
1

Start by scoring along the dotted lines on the ears using the craft knife. Ask an adult for help on this process.

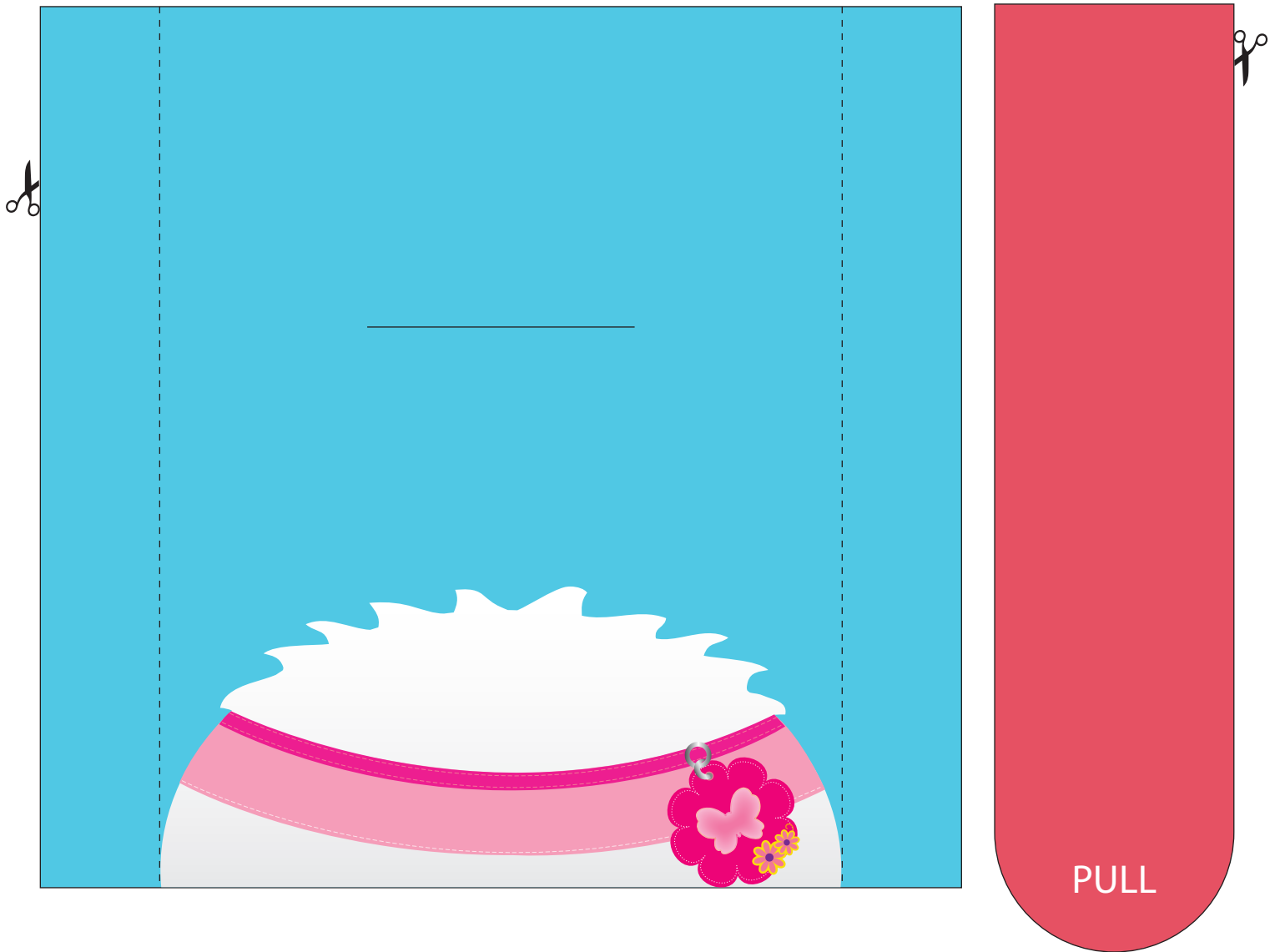


2

Flip the ears around, apply glue on the area between the ears and paste the tongue.

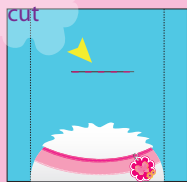


Continues next page...



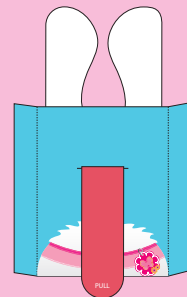
3

For the next piece, ask an adult to cut along the line on the center with the knife and fold or score along dotted lines



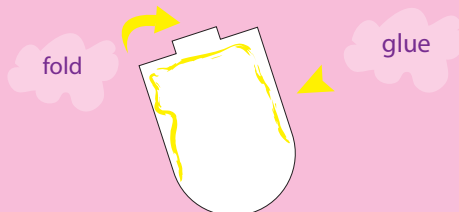
4

Insert the tongue through the tab from the back as shown below.



5

Fold the top flap and apply glue on the back of the dog's face but just on the top and sides.



6

Paste the face on top of the background lining with the top card edge.





Let's do the back of the card!

7

Cut around the back of the card.



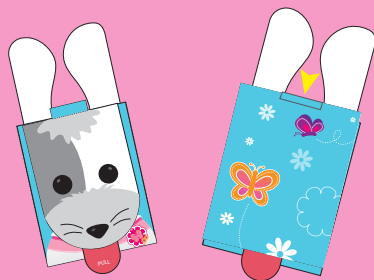
8

Apply glue between the edge and fold on the dog piece. Then, paste the back card on white side.



9

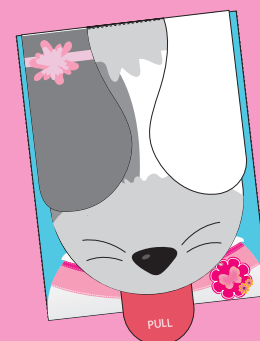
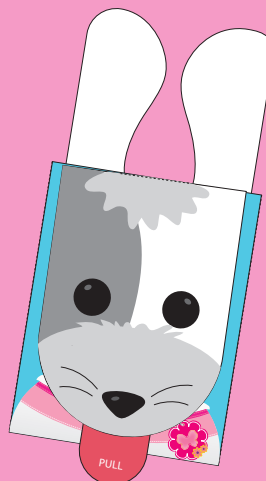
Also, glue the tab on top of dog's face to the back of the card.



You are done!
Have fun



Share with your friends



Visit us at
www.mylifeasdolls.com



my life
as